

# Standard Thermocouple Connector Plug

## Features

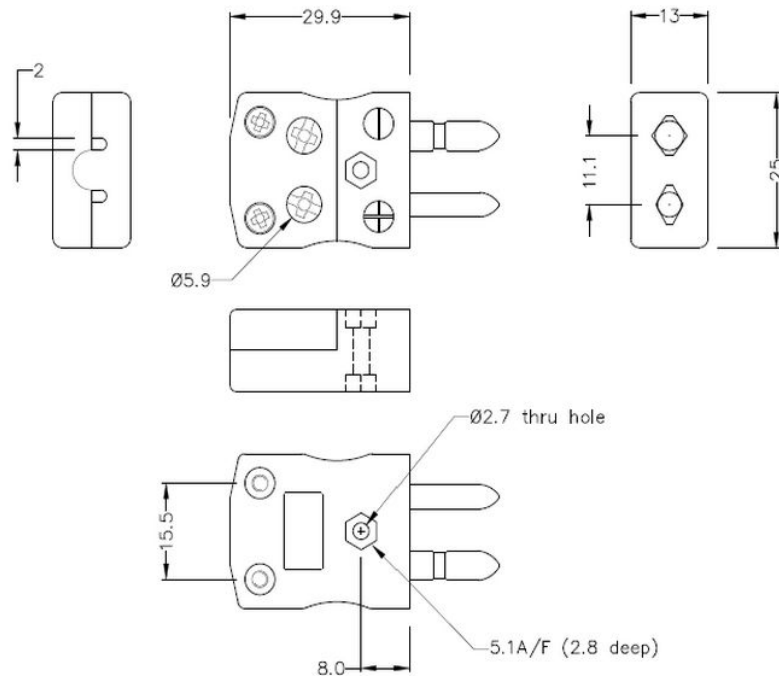
- Easy 'jab-in' connection for rapid termination
- Just push wire in and tighten screw
- Contacts are polarised to prevent incorrect connection



## Specification

Sensor Type	J
Connector Size	Standard
Connector Type	Quick Wire Plug
Colour	Black
Min. Temperature	220 °C
Pins	Solid Round Pins
+Positive Contact	Fe
-Negative Contact	CuNi
Standards Met	BS EN 50212:1997; RoHS

## Drawing



**Standard in-line Plug - Quick Wire**  
(dimensions in mm)

Art. Nr.  
RND 410-00214